



BEN HOGAN LEARNING CENTER AT SQUAW CREEK CAPITAL CAMPAIGN

AN ACE FOR PARKER COUNTY

CAPITAL CAMPAIGN GOAL: \$1.7 MILLION

Opening Spring 2021



"First Tee of Fort Worth is my backbone. Everything I have accomplished has been through this program."

Alex Lowe, First Tee of Fort Worth Alumnus

GOOD AT GOLF.

GREAT AT LIFE.

www.thefirstteefortworth.org/parkercounty

GOING WEST: EXPANDING OUR IMPACT IN PARKER COUNTY



2016:

First Tee of Fort Worth begins programming at Squaw Creek with 300 participants.

The U.S. Census Bureau reports that 25% of Parker County residents are under 18.

2017:

Participation at the Squaw Creek location grows to over 1,000 participants.

Ben Hogan Foundation Board of Directors approves new Ben Hogan Learning Center at Squaw Creek.

2018 - 2019:

Programming at the Squaw Creek location is at capacity. Capital Campaign launches.

A North Central Texas Council of Governments report predicts the 2030 population of Parker County to be over 328,000 individuals, up from 129,411 in 2017.

2020:

The groundbreaking for the Ben Hogan Learning Center at Squaw Creek was held in May and construction is underway.

The Capital Campaign continues as we raise the necessary funds to complete the facility.

THE NEED IS HERE.
YOU CAN MAKE THE
DIFFERENCE.

CAMPAIGN GOAL: \$1.7 MILLION



We provide educational programs that build character, instill life-enhancing values, and promote healthy choices, helping young people to become better citizens now and in the future. Today's young people face a variety of challenges including social media influences, over-exposure to the internet, family pressure, and school challenges, all re-defining the term "at-risk" and necessitating support and guidance.

GOOD AT GOLF. GREAT AT LIFE.

First Tee wants every young person to have the very best shot at leading an exceptional life. We use the challenges and rewards of golf as a platform to teach the life skills necessary to do just that.



I've been an educator for almost 40 years and I've seen dozens of youth development and leadership programs. Most of them do good things, but the impact First Tee's program has on lives of young people is undeniable. Until I joined the organization, I had never witnessed anything like it. It is unique, and it is powerful.

- Kevin Long, Executive Director

FIRST TEE'S LIFE SKILLS EXPERIENCE: WHAT SETS OUR PROGRAM APART

At First Tee, golf and life lessons are seamlessly incorporated into each experience.

Nine Core Values

Honesty
Integrity
Sportsmanship
Respect
Confidence
Responsibility
Perseverance
Courtesy
Judgment

Nine Healthy Habits

Physical: Energy, Play, Safety
Emotional: Vision, Mind, Family
Social: Friends, School, Community

Interpersonal Skills

How to show courtesy towards others, what to do when meeting someone new, how to effectively communicate with others and how to model good sportsmanship.

Self-Management

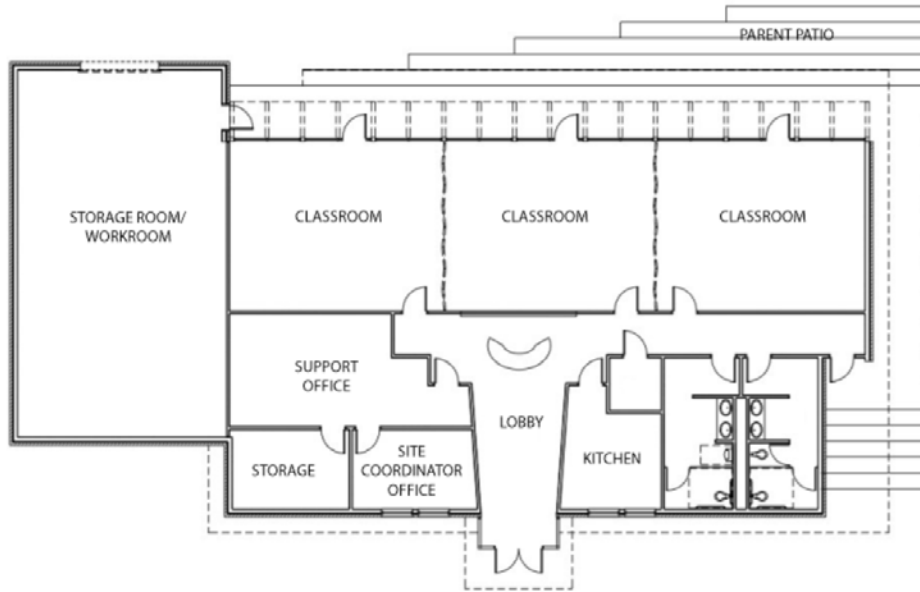
Developing techniques for managing thoughts and emotions, using good judgment, staying calm under pressure and building confidence.

Goal Setting

How to set goals that are positive and important to you, setting goals that are specific and under your control, how to attain your goals and reach your desired dreams.

Resiliency Skills

Strategies to adapt, manage and overcome challenges and peer pressure, building go-to teams and conflict management.



NAMING OPPORTUNITIES

INTERIOR OPPORTUNITIES AVAILABLE

Classroom 2:	\$50,000
FFE Sponsor:	\$50,000
Storage Room/Workroom:	\$25,000
Kitchen/Nutrition Area:	\$25,000
Site Coordinator Office:	\$25,000
Donor Wall Sponsor:	\$25,000
Technology Sponsor:	\$25,000
Garage Sponsor:	\$20,000
Instructional Equipment Sponsor:	\$20,000

RESERVED

Classroom 1	Family Patio
Classroom 3	Lobby - Entrance Area

CORE VALUE PANELS AVAILABLE

Sportsmanship:	\$25,000
RESERVED	
Judgment	Responsibility
Integrity	Perseverance
Confidence	Respect
Honesty	Courtesy

Additional Donor Levels

Ace:	\$15,000
Eagle:	\$10,000
Birdie:	\$5,000
Par:	\$1,000

All gifts will be permanently recognized on a donor wall in First Tee of Fort Worth's new Ben Hogan Learning Center at Squaw Creek. The backdrop of the donor wall will be made of the original wood flooring from Ben Hogan's childhood home.

For questions or to make a tax-deductible gift to the Capital Campaign for the Ben Hogan Learning Center at Squaw Creek, please contact:

Kevin Long, Executive Director
 (817) 420-9370 | klong@thefirstteeforth.org

www.thefirstteeforth.org/parkercounty